

The 2015 Index of Multiple Deprivation : Northowram and Shelf Ward



Introduction

The English Indices of Multiple Deprivation 2015 (IMD 2015) is the latest official Government measure of relative deprivation for small areas. It is based on seven individual domains called Income, Employment, Education Skills and Training, Health and Disability, Crime, Barriers to Housing and Services, and Living Environment. There are two supplementary indices for income deprived children (IDACI) and people aged 60+ (IDAOP). IMD 2015 includes measures of relative deprivation for small areas of approximately 1,500 residents, called Lower Layer Super Output areas (LSOAs). There are 32,844 LSOAs in England of which 128 are in Calderdale and 7 in Northowram and Shelf Ward.

This report summarises IMD 2015 results for the LSOAs in this ward. This includes overall results and results for the seven individual domains and the two supplementary indices.

- Table 1 lists the number of LSOAs in the 10%, 20% and 30% most deprived nationally for Northowram and Shelf Ward and Calderdale
- Table 2 lists the relative rank and percentage rank for LSOAs in this ward compared to all LSOAs in England.
- Table 3 lists the percentage of residents', children and older people who are income deprived and percentage of working age people who are employment deprived.
- The map on page 3 shows the IMD 2015 percentage result for each LSOA in the Ward compared with all LSOAs in England.

Table 1: Number of LSOAs in the 10%, 20% and 30% most deprived neighbourhoods in England by IMD Domain for Northowram and Shelf Ward and Calderdale

Domain	10% Most Deprived		>10% - 20% Most Deprived		>20% - 30% Most Deprived		Total	
	Northowram and Shelf Ward	Calderdale	Northowram and Shelf Ward	Calderdale	Northowram and Shelf Ward	Calderdale	Northowram and Shelf Ward	Calderdale
Overall	0	19	0	13	0	14	7	128
Income	0	20	0	12	0	16	7	128
Employment	0	20	0	19	0	13	7	128
Education, Skills and Training	0	16	0	10	0	11	7	128
Health Deprivation and Disability	0	16	0	15	0	21	7	128
Crime	0	10	0	15	1	18	7	128
Barriers to Housing and Services	0	1	0	3	0	6	7	128
Living Environment	0	33	1	26	2	11	7	128
Income Deprivation Affecting Children*	0	15	0	16	0	13	7	128
Income Deprivation Affecting Older People*	0	10	0	11	0	14	7	128

***Income Deprivation among children Index (IDACI)** measures the proportion of children aged 0-15 in families that are in receipt of Income Support, income-based Jobseeker's Allowance, Pension Credit Guarantee or Child Tax Credit below a given threshold. **Income Deprivation among Older People index (IDAOP)** measures the proportion of older people aged 60+ that are in receipt of Income Support, income-based Jobseeker's Allowance, Pension Credit Guarantee or Child Tax Credit below a given threshold

Table 2: IMD ranks and % ranks for LSOAs in Northowram and Shelf Ward		Lower-Layer Super Output Area						
		E01010931	E01010932	E01010933	E01010934	E01010935	E01010936	E01010937
Overall	Rank	24,477	20,743	21,916	15,412	28,604	30,004	23,266
	Rank %	74.53%	63.16%	66.73%	46.92%	87.09%	91.35%	70.84%
Income Domain	Rank	19,700	24,138	23,024	18,463	27,740	30,703	24,684
	Rank %	59.98%	73.49%	70.10%	56.21%	84.46%	93.48%	75.16%
Employment Domain	Rank	18,726	17,339	22,442	16,193	26,677	31,807	25,478
	Rank %	57.01%	52.79%	68.33%	49.30%	81.22%	96.84%	77.57%
Education, Skills and Training Domain	Rank	26,283	19,766	22,112	16,454	25,673	29,307	22,646
	Rank %	80.02%	60.18%	67.32%	50.10%	78.17%	89.23%	68.95%
Health Deprivation and Disability Domain	Rank	18,342	17,660	17,712	16,073	22,173	25,301	18,136
	Rank %	55.85%	53.77%	53.93%	48.94%	67.51%	77.03%	55.22%
Crime Domain	Rank	28,678	10,549	20,247	6,923	22,289	23,033	19,081
	Rank %	87.32%	32.12%	61.65%	21.08%	67.86%	70.13%	58.10%
Barriers to Housing and Services Domain	Rank	23,911	25,085	22,063	20,065	31,174	20,926	18,069
	Rank %	72.80%	76.38%	67.18%	61.09%	94.92%	63.71%	55.01%
Living Environment Domain	Rank	21,308	14,344	7,005	6,048	14,714	13,071	8,992
	Rank %	64.88%	43.67%	21.33%	18.41%	44.80%	39.80%	27.38%
Income Deprivation Affecting Children Index	Rank	22304	22603	27810	16910	28518	30553	21490
	Rank %	67.91%	68.82%	84.67%	51.49%	86.83%	93.02%	65.43%
Income Deprivation Affecting Older People	Rank	17109	28379	20034	20501	29548	26463	26091
	Rank %	52.09%	86.41%	61.00%	62.42%	89.96%	80.57%	79.44%

Table 2 Colour Key

- LSOA ranked as within the 1st decile of relatively most deprived LSOAs in England
- LSOA ranked as within 2nd decile of relatively most deprived LSOAs in England (with the 1st most deprived)

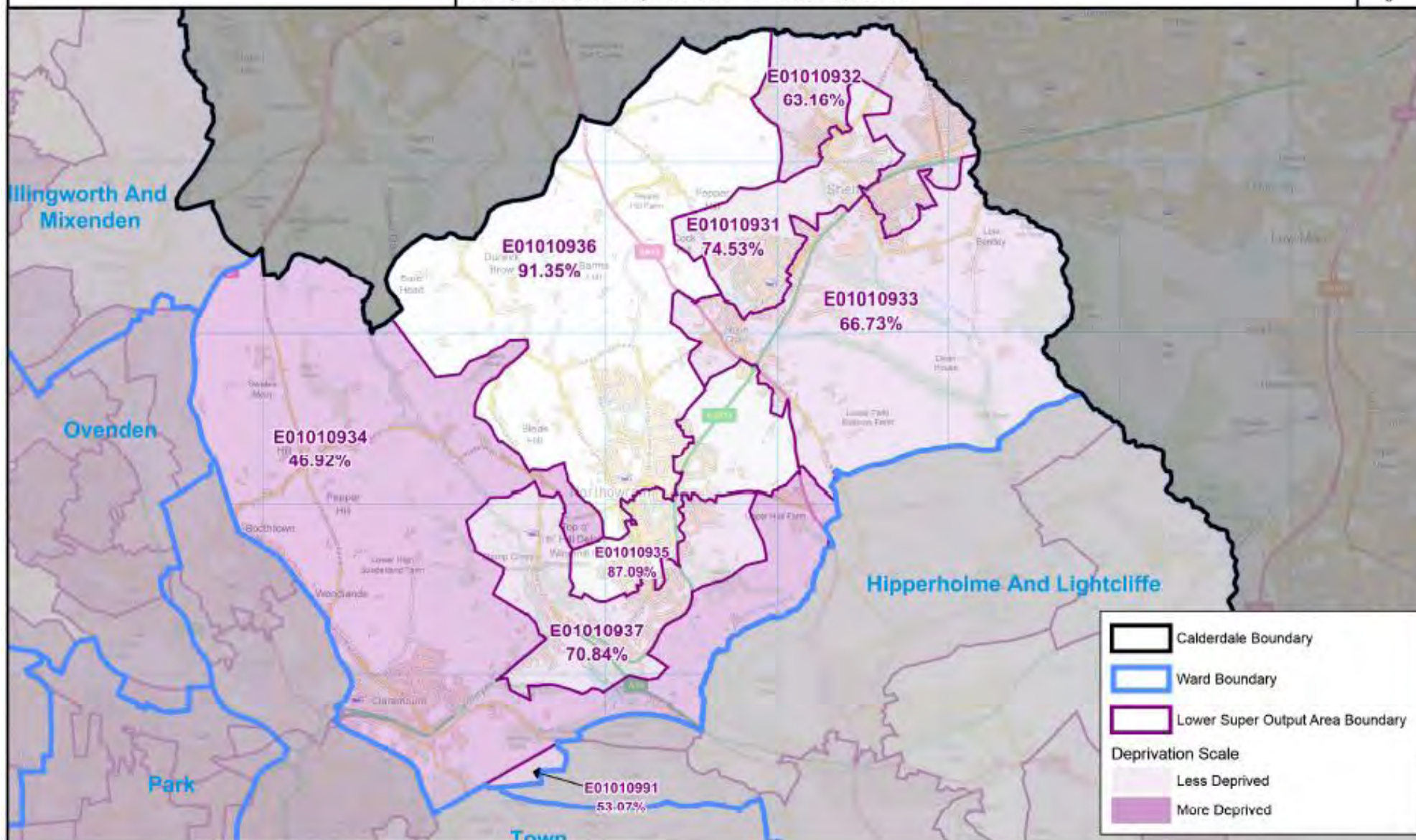
Table 3 : % residents that are Income deprived or Employment deprived - Northowram and Shelf Ward and Calderdale

Domain	Indicator	Northowram and Shelf Ward	Calderdale
Income	% residents that are income deprived	6.8%	16.4%
	IDACI : % children aged 0-15 in families that are income deprived	7.9%	21.4%
	IDAOP1 : % older people aged 60+ that are income deprived	9.2%	16.4%
Employment	% residents of working age (women aged 18-59 and men aged 18-64) that are employment deprived	7.0%	14.0%

Further information Selected IMD 2015 results for Calderdale are available to download from [Calderdale Dataworks](#); IMD 2015 complete results for England are available from the [Gov.uk](#) website; for all other enquiries contact performance.businessintelligence@calderdale.gov.uk

Index of Multiple Deprivation for Northowram and Shelf Ward

A Lower Super Output Area (LSOA) is a small geographical unit of approximately 1,500 households. This map shows the ranking of relative deprivation against all other LSOAs in England. The higher the percentage, the lower the level of deprivation.



Calderdale Boundary
 Ward Boundary
 Lower Super Output Area Boundary
Deprivation Scale
 Less Deprived
 More Deprived



Communities and Service Support
HR IT and Transformation
Performance and Business Intelligence

Scale 1:30,000
<http://dataworks.calderdale.gov.uk>

Date: 06/07/2016
© Crown Copyright and database right 2016.
Ordnance Survey Licence number 10023069.