

The 2015 Index of Multiple Deprivation : Town Ward



Introduction

The English Indices of Multiple Deprivation 2015 (IMD 2015) is the latest official Government measure of relative deprivation for small areas. It is based on seven individual domains called Income, Employment, Education Skills and Training, Health and Disability, Crime, Barriers to Housing and Services, and Living Environment. There are two supplementary indices for income deprived children (IDACI) and people aged 60+ (IDAOP). IMD 2015 includes measures of relative deprivation for small areas of approximately 1,500 residents, called Lower Layer Super Output areas (LSOAs). There are 32,844 LSOAs in England of which 128 are in Calderdale and 8 in Town Ward.

This report summarises IMD 2015 results for the LSOAs in this ward. This includes overall results and results for the seven individual domains and two supplementary indices.

- Table 1 lists the number of LSOAs in the 10%, 20% and 30% most deprived nationally for Town Ward and Calderdale
- Table 2 lists the relative rank and percentage rank for LSOAs in this ward compared to all LSOAs in England.
- Table 3 lists the percentage of residents', children and older people who are income deprived and percentage of working age people who are employment deprived.
- The map on page 3 shows the IMD 2015 percentage result for each LSOA in the Ward compared with all LSOAs in England.

Table 1: Number of LSOAs in the 10%, 20% and 30% most deprived neighbourhoods in England by IMD Domain for Town Ward and Calderdale

Domain	10% Most Deprived		>10% - 20% Most Deprived		>20% - 30% Most Deprived		Total	
	Town Ward	Calderdale	Town Ward	Calderdale	Town Ward	Calderdale	Town Ward	Calderdale
Overall	2	19	0	13	2	14	8	128
Income	2	20	0	12	2	16	8	128
Employment	2	20	1	19	1	13	8	128
Education, Skills and Training	0	16	1	10	2	11	8	128
Health Deprivation and Disability	2	16	1	15	1	21	8	128
Crime	3	10	0	15	2	18	8	128
Barriers to Housing and Services	0	1	0	3	0	6	8	128
Living Environment	3	33	3	26	1	11	8	128
Income Deprivation Affecting Children*	1	15	1	16	1	13	8	128
Income Deprivation Affecting Older People*	1	10	0	11	3	14	8	128

***Income Deprivation among children Index (IDACI)** measures the proportion of children aged 0-15 in families that are in receipt of Income Support, income-based Jobseeker's Allowance, Pension Credit Guarantee or Child Tax Credit below a given threshold. **Income Deprivation among Older People index (IDAOP)** measures the proportion of older people aged 60+ that are in receipt of Income Support, income-based Jobseeker's Allowance, Pension Credit Guarantee or Child Tax Credit below a given threshold

Table 2: IMD ranks and % ranks for LSOAs in Town Ward		Lower-Layer Super Output Area							
		E01010967	E01010989	E01010990	E01010991	E01010992	E01010993	E01010994	E01032923
Overall	Rank	2,074	11,926	16,626	17,429	13,249	7,741	1,237	6,638
	Rank %	6.31%	36.31%	50.62%	53.07%	40.34%	23.57%	3.77%	20.21%
Income Domain	Rank	3,069	17,239	12,041	15,367	14,983	7,032	3,027	7,601
	Rank %	9.34%	52.49%	36.66%	46.79%	45.62%	21.41%	9.22%	23.14%
Employment Domain	Rank	1,394	11,326	13,477	16,020	15,243	7,864	1,210	4,142
	Rank %	4.24%	34.48%	41.03%	48.78%	46.41%	23.94%	3.68%	12.61%
Education, Skills and Training Domain	Rank	5,266	23,036	13,560	17,517	13,322	9,664	15,045	8,188
	Rank %	16.03%	70.14%	41.29%	53.33%	40.56%	29.42%	45.81%	24.93%
Health Deprivation and Disability Domain	Rank	2,827	11,626	16,508	17,142	13,274	8,382	508	6,134
	Rank %	8.61%	35.40%	50.26%	52.19%	40.42%	25.52%	1.55%	18.68%
Crime Domain	Rank	1,417	2,753	25,430	15,934	9,513	9,526	738	14,578
	Rank %	4.31%	8.38%	77.43%	48.51%	28.96%	29.00%	2.25%	44.39%
Barriers to Housing and Services Domain	Rank	27,228	20,160	32,464	23,658	21,709	21,752	23,719	26,775
	Rank %	82.90%	61.38%	98.84%	72.03%	66.10%	66.23%	72.22%	81.52%
Living Environment Domain	Rank	2,933	4,159	11,432	9,291	3,718	3,042	252	3,300
	Rank %	8.93%	12.66%	34.81%	28.29%	11.32%	9.26%	0.77%	10.05%
Income Deprivation Affecting Children Index	Rank	2443	15034	10607	13640	16094	5763	7911	12281
	Rank %	7.44%	45.77%	32.30%	41.53%	49.00%	17.55%	24.09%	37.39%
Income Deprivation Affecting Older People	Rank	7109	19715	14622	18852	15404	9631	2948	9743
	Rank %	21.64%	60.03%	44.52%	57.40%	46.90%	29.32%	8.98%	29.66%

Table 2 Colour Key

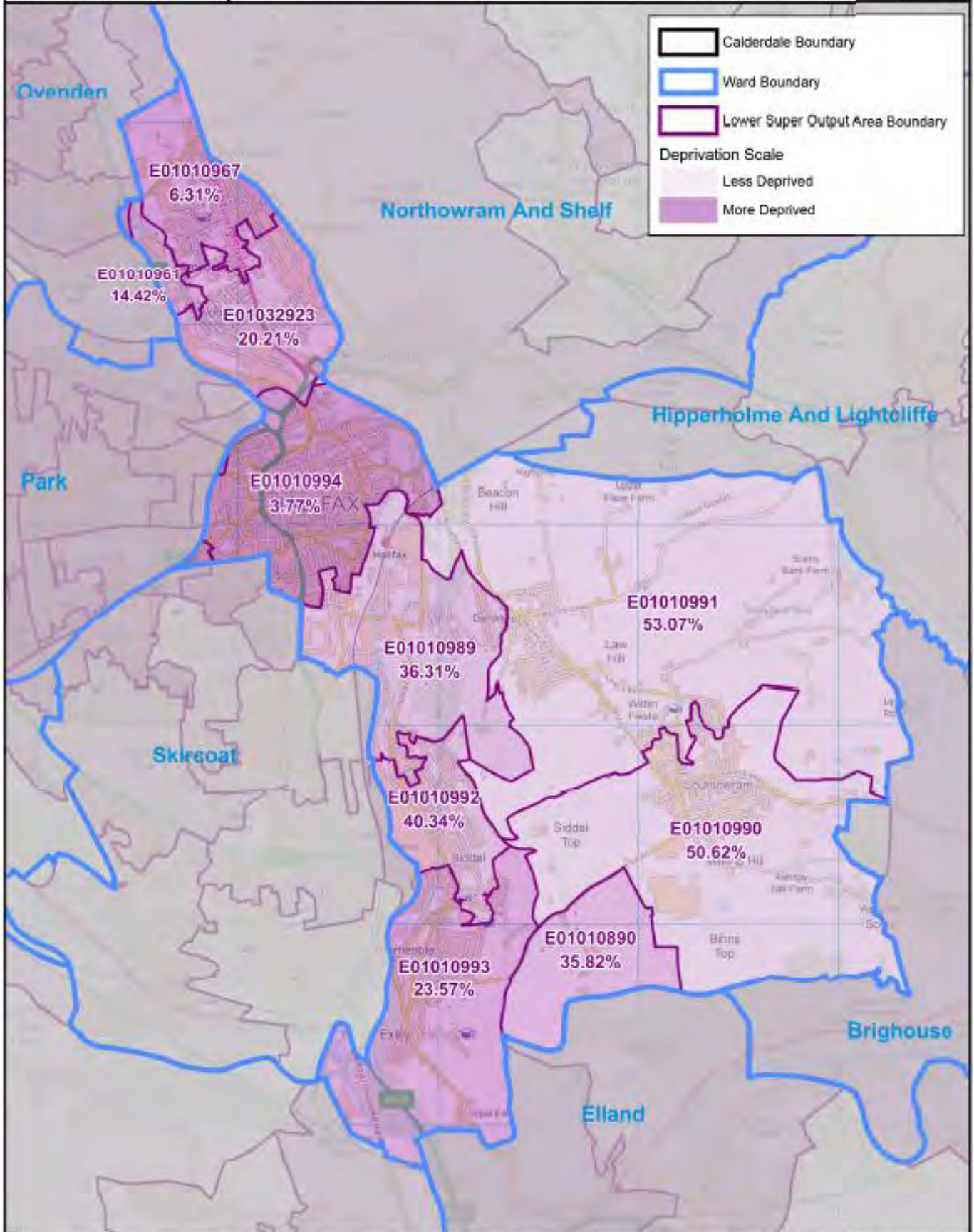
- LSOA ranked as within the 1st decile of relatively most deprived LSOAs in England
- LSOA ranked as within 2nd decile of relatively most deprived LSOAs in England (with the 1st most deprived)

Table 3 : % residents that are Income deprived or Employment deprived - Town Ward and Calderdale			
Domain	Indicator	Town Ward	Calderdale
Income	% residents that are income deprived	19.7%	16.4%
	IDACI : % children aged 0-15 in families that are income deprived	23.8%	21.4%
	IDAOP1 : % older people aged 60+ that are income deprived	21.4%	16.4%
Employment	% residents of working age (women aged 18-59 and men aged 18-64) that are employment deprived	18.1%	14.0%

Further information Selected IMD 2015 results for Calderdale – including maps - are available to download from [Calderdale Dataworks](#); IMD 2015 complete results for England are available from the [Gov.uk](#) website; for all other enquiries contact performance.businessintelligence@calderdale.gov.uk

Index of Multiple Deprivation for Town Ward

A Lower Super Output Area (LSOA) is a small geographical unit of approximately 1,500 households. This map shows the ranking of relative deprivation against all other LSOAs in England. The higher the percentage, the lower the level of deprivation.



Communities and Service Support
HR IT and Transformation
Performance and
Business Intelligence

<http://dataworks.calderdale.gov.uk>

Scale 1:25,000

Date: 06/07/2016

© Crown Copyright and database right 2016.
Ordnance Survey Licence number 10023069.